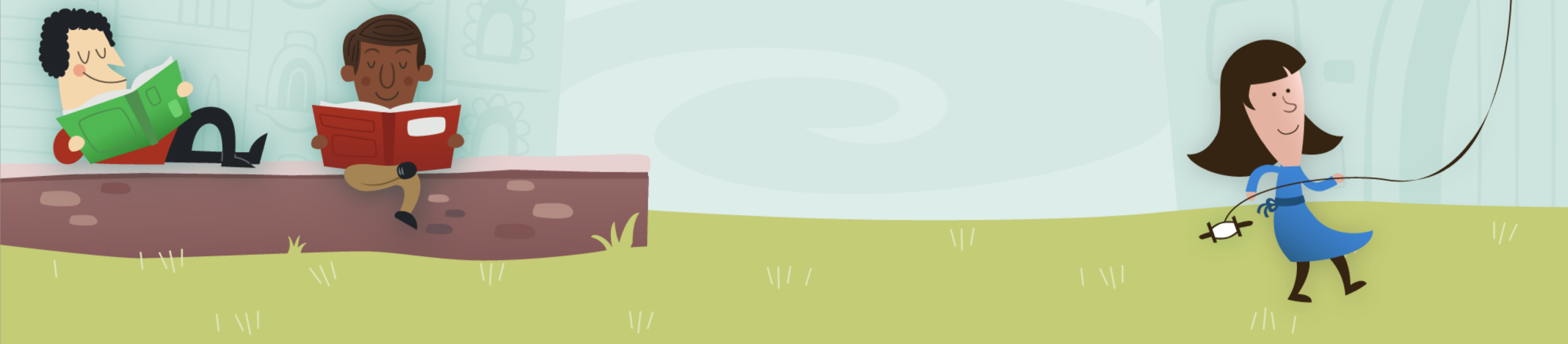


Institute for Transformation and Change
School Based Programs
400 29th Street, Suite 405
Oakland, CA 94609

www.institutefortransformationandchange.com



Our Goal



The goal of the staff at the Center for Transition and Change is to assist in improving the quality of life for children who face the challenges associated with a wide range of developmental and behavioral problems.

We provide integrated therapeutic and assessment services which are tailored to meet the specific needs of each individual child. We believe that children can more fully realize their potential through the determination of their unique pattern of strengths and weaknesses.

Through diagnostic evaluation, personalized recommendations and intervention, we strive as a staff to help children achieve success in their everyday lives.



Our Staff

- Diversity is important within our agency as it helps employees relate to a wider client base and helps create an exciting, innovative environment to work together as a team. Our diverse staff is composed of employees with varying characteristics including, but not limited to gender, ethnicity, education.
- Members of our team provide the following language services: English, Spanish, Cambodian.
- Our staff represents a number of nationalities that may help with relating to the populations we serve.



Services Offered

We are NPA certified and specialize in individually tailored assessments Psycho-educational, Neuropsychological, Autism Spectrum Disorders including Asperger's Disorder, Attention Deficit Hyperactivity Disorder, and emotional issues.

We offer multidisciplinary clinical evaluations and services for children ages 5 through 21 which include: Psychological, Educational/Achievement, Behavioral Consultation (Functional Behavioral Analysis).

Our assessments are integrated into a personalized profile of strengths and weaknesses as well as specific interventions. We feel that it is critical to integrate all aspects of a child's functioning in order to plan the most appropriate educational and behavioral interventions which includes therapeutic services to ensure success.

The staff are available to attend school-related conferences such as Individualized Education Program (IEP) or Student Support Team (SST) meetings.



Philosophy

- We specialize in working with diverse populations, including cultural minorities, medically fragile children, and children with severe behavioral difficulties. This population can be difficult to assess because of the special needs involved.
- Our philosophy is that the results of assessments are only as good as the fit of the appropriate expertise, testing instruments, and the comfort level of the person being tested. We use a variety of tests and diagnostic methods to capture each individual's profile of strengths and weaknesses. We conduct psychological assessments, neuropsychological assessments, and psychoeducational assessments. Some questions and conditions that we can assess include:

Autism Spectrum Disorders, Learning Disabilities, Academic Underachievement, Intellectual Giftedness, Attention-Deficit/ Hyperactivity Disorder, Nonverbal learning Disability, Intellectual Disability, and Diagnostic Clarification for psychiatric disorders.

